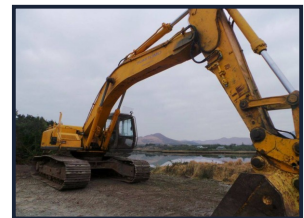


Noel O'Shea

PLANT LIMITED

Sumitomo SH300-2



£POA

31,000 kg
Mitsubishi Engine
Piped
Good Condition

Product Details

<i>Category/Type</i>	<i>Excavators</i>
<i>Make</i>	<i>Sumitomo</i>
<i>Model</i>	<i>SH300-2</i>
<i>Year</i>	<i>2000</i>
<i>Hours</i>	<i>-</i>

Bishopsland, Watergrasshill, Co Cork, Ireland
Tel: +353 (0)21 4513 686 Mob: +353 (0)86 2440 276
www.noelosheaplantsales.com sales@noelosheaplant.com