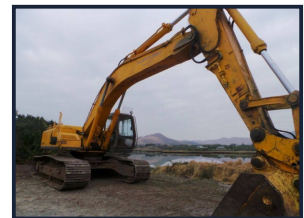


# Noel O'Shea

PLANT LIMITED

## Sumitomo SH300-2



**£POA**

31,000 kg  
Mitsubishi Engine  
Piped  
Good Condition

### Product Details

<b>Category/Type</b>	<b>Excavators</b>
<b>Make</b>	<b>Sumitomo</b>
<b>Model</b>	<b>SH300-2</b>
<b>Year</b>	<b>2000</b>
<b>Hours</b>	<b>-</b>

**Bishopsland, Watergrasshill, Co Cork, Ireland**  
Tel: +353 (0)21 4513 686 Mob: +353 (0)86 2440 276  
[www.noelosheaplantsales.com](http://www.noelosheaplantsales.com) [sales@noelosheaplant.com](mailto:sales@noelosheaplant.com)